

[Home \(/\)](#) > [Programs \(/programs/\)](#) > [Environmental Review \(/programs/environmental-review/\)](#) > ASD Calculator

Acceptable Separation Distance (ASD) Electronic Assessment Tool

The Environmental Planning Division (EPD) has developed an electronic-based assessment tool that calculates the Acceptable Separation Distance (ASD) from stationary hazards. The ASD is the distance from above ground stationary containerized hazards of an explosive or fire prone nature, to where a HUD assisted project can be located. The ASD is consistent with the Department's standards of blast overpressure (0.5 psi-buildings) and thermal radiation (450 BTU/ft² - hr - people and 10,000 BTU/ft² - hr - buildings). Calculation of the ASD is the first step to assess site suitability for proposed HUD-assisted projects near stationary hazards. Additional guidance on ASDs is available in the Department's guidebook "Siting of HUD- Assisted Projects Near Hazardous Facilities" and the regulation 24 CFR Part 51, Subpart C, Siting of HUD-Assisted Projects Near Hazardous Operations Handling Conventional Fuels or Chemicals of an Explosive or Flammable Nature.

Note: Tool tips, containing field specific information, have been added in this tool and may be accessed by hovering over the ASD result fields with the mouse.

Acceptable Separation Distance Assessment Tool

| | |
|---|---|
| Is the container above ground? | Yes: <input checked="" type="checkbox"/> No: <input type="checkbox"/> |
| Is the container under pressure? | Yes: <input type="checkbox"/> No: <input checked="" type="checkbox"/> |
| Does the container hold a cryogenic liquified gas? | Yes: <input type="checkbox"/> No: <input type="checkbox"/> |
| Is the container diked? | Yes: <input type="checkbox"/> No: <input checked="" type="checkbox"/> |
| What is the volume (gal) of the container? | <input type="text" value="599"/> |
| What is the Diked Area Length (ft)? | <input type="text"/> |
| What is the Diked Area Width (ft)? | <input type="text"/> |
| <input type="button" value="Calculate Acceptable Separation Distance"/> | |
| Diked Area (sqft) | <input type="text"/> |
| ASD for Blast Over Pressure (ASDBOP) | <input type="text"/> |

| | |
|---|--------|
| ASD for Thermal Radiation for People (ASDPPU) | 223.40 |
| ASD for Thermal Radiation for Buildings (ASDBPU) | 39.67 |
| ASD for Thermal Radiation for People (ASDPNPD) | |
| ASD for Thermal Radiation for Buildings (ASDBNPD) | |

For mitigation options, please click on the following link: Mitigation Options
(</resource/3846/acceptable-separation-distance-asd-hazard-mitigation-options/>)

Providing Feedback & Corrections

After using the ASD Assessment Tool following the directions in this User Guide, users are encouraged to provide feedback on how the ASD Assessment Tool may be improved. Users are also encouraged to send comments or corrections for the improvement of the tool.

Please send comments or other input using the **Contact Us**
(<https://www.hudexchange.info/contact-us/>) form.

Related Information

- ASD User Guide (</resource/3839/acceptable-separation-distance-asd-assessment-tool-user-guide/>)
- ASD Flow Chart (</resource/3840/acceptable-separation-distance-asd-flowchart/>)

[Home \(/\)](#) > [Programs \(/programs/\)](#) > [Environmental Review \(/programs/environmental-review/\)](#) > ASD Calculator

Acceptable Separation Distance (ASD) Electronic Assessment Tool

The Environmental Planning Division (EPD) has developed an electronic-based assessment tool that calculates the Acceptable Separation Distance (ASD) from stationary hazards. The ASD is the distance from above ground stationary containerized hazards of an explosive or fire prone nature, to where a HUD assisted project can be located. The ASD is consistent with the Department's standards of blast overpressure (0.5 psi-buildings) and thermal radiation (450 BTU/ft² - hr - people and 10,000 BTU/ft² - hr - buildings). Calculation of the ASD is the first step to assess site suitability for proposed HUD-assisted projects near stationary hazards. Additional guidance on ASDs is available in the Department's guidebook "Siting of HUD- Assisted Projects Near Hazardous Facilities" and the regulation 24 CFR Part 51, Subpart C, Siting of HUD-Assisted Projects Near Hazardous Operations Handling Conventional Fuels or Chemicals of an Explosive or Flammable Nature.

Note: Tool tips, containing field specific information, have been added in this tool and may be accessed by hovering over the ASD result fields with the mouse.

Acceptable Separation Distance Assessment Tool

| | |
|---|---|
| Is the container above ground? | Yes: <input checked="" type="checkbox"/> No: <input type="checkbox"/> |
| Is the container under pressure? | Yes: <input type="checkbox"/> No: <input checked="" type="checkbox"/> |
| Does the container hold a cryogenic liquified gas? | Yes: <input type="checkbox"/> No: <input type="checkbox"/> |
| Is the container diked? | Yes: <input type="checkbox"/> No: <input checked="" type="checkbox"/> |
| What is the volume (gal) of the container? | <input type="text" value="1199"/> |
| What is the Diked Area Length (ft)? | <input type="text"/> |
| What is the Diked Area Width (ft)? | <input type="text"/> |
| <input type="button" value="Calculate Acceptable Separation Distance"/> | |
| Diked Area (sqft) | <input type="text"/> |
| ASD for Blast Over Pressure (ASDBOP) | <input type="text"/> |

| | |
|---|--------|
| ASD for Thermal Radiation for People (ASDPPU) | 298.29 |
| ASD for Thermal Radiation for Buildings (ASDBPU) | 54.68 |
| ASD for Thermal Radiation for People (ASDPNPD) | |
| ASD for Thermal Radiation for Buildings (ASDBNPD) | |

For mitigation options, please click on the following link: Mitigation Options
(</resource/3846/acceptable-separation-distance-asd-hazard-mitigation-options/>)

Providing Feedback & Corrections

After using the ASD Assessment Tool following the directions in this User Guide, users are encouraged to provide feedback on how the ASD Assessment Tool may be improved. Users are also encouraged to send comments or corrections for the improvement of the tool.

Please send comments or other input using the **Contact Us**
(<https://www.hudexchange.info/contact-us/>) form.

Related Information

- ASD User Guide (</resource/3839/acceptable-separation-distance-asd-assessment-tool-user-guide/>)
- ASD Flow Chart (</resource/3840/acceptable-separation-distance-asd-flowchart/>)

[Home \(/\)](#) > [Programs \(/programs/\)](#) > [Environmental Review \(/programs/environmental-review/\)](#) > ASD Calculator

Acceptable Separation Distance (ASD) Electronic Assessment Tool

The Environmental Planning Division (EPD) has developed an electronic-based assessment tool that calculates the Acceptable Separation Distance (ASD) from stationary hazards. The ASD is the distance from above ground stationary containerized hazards of an explosive or fire prone nature, to where a HUD assisted project can be located. The ASD is consistent with the Department's standards of blast overpressure (0.5 psi-buildings) and thermal radiation (450 BTU/ft² - hr - people and 10,000 BTU/ft² - hr - buildings). Calculation of the ASD is the first step to assess site suitability for proposed HUD-assisted projects near stationary hazards. Additional guidance on ASDs is available in the Department's guidebook "Siting of HUD- Assisted Projects Near Hazardous Facilities" and the regulation 24 CFR Part 51, Subpart C, Siting of HUD-Assisted Projects Near Hazardous Operations Handling Conventional Fuels or Chemicals of an Explosive or Flammable Nature.

Note: Tool tips, containing field specific information, have been added in this tool and may be accessed by hovering over the ASD result fields with the mouse.

Acceptable Separation Distance Assessment Tool

| | |
|---|---|
| Is the container above ground? | Yes: <input checked="" type="checkbox"/> No: <input type="checkbox"/> |
| Is the container under pressure? | Yes: <input type="checkbox"/> No: <input checked="" type="checkbox"/> |
| Does the container hold a cryogenic liquified gas? | Yes: <input type="checkbox"/> No: <input type="checkbox"/> |
| Is the container diked? | Yes: <input type="checkbox"/> No: <input checked="" type="checkbox"/> |
| What is the volume (gal) of the container? | <input type="text" value="19442"/> |
| What is the Diked Area Length (ft)? | <input type="text"/> |
| What is the Diked Area Width (ft)? | <input type="text"/> |
| <input type="button" value="Calculate Acceptable Separation Distance"/> | |
| Diked Area (sqft) | <input type="text"/> |
| ASD for Blast Over Pressure (ASDBOP) | <input type="text"/> |

| | |
|---|--------|
| ASD for Thermal Radiation for People (ASDPPU) | 952.12 |
| ASD for Thermal Radiation for Buildings (ASDBPU) | 198.24 |
| ASD for Thermal Radiation for People (ASDPNPD) | |
| ASD for Thermal Radiation for Buildings (ASDBNPD) | |

For mitigation options, please click on the following link: Mitigation Options
(</resource/3846/acceptable-separation-distance-asd-hazard-mitigation-options/>)

Providing Feedback & Corrections

After using the ASD Assessment Tool following the directions in this User Guide, users are encouraged to provide feedback on how the ASD Assessment Tool may be improved. Users are also encouraged to send comments or corrections for the improvement of the tool.

Please send comments or other input using the **Contact Us**
(<https://www.hudexchange.info/contact-us/>) form.

Related Information

- ASD User Guide (</resource/3839/acceptable-separation-distance-asd-assessment-tool-user-guide/>)
- ASD Flow Chart (</resource/3840/acceptable-separation-distance-asd-flowchart/>)

[Home \(/\)](#) > [Programs \(/programs/\)](#) > [Environmental Review \(/programs/environmental-review/\)](#) > ASD Calculator

Acceptable Separation Distance (ASD) Electronic Assessment Tool

The Environmental Planning Division (EPD) has developed an electronic-based assessment tool that calculates the Acceptable Separation Distance (ASD) from stationary hazards. The ASD is the distance from above ground stationary containerized hazards of an explosive or fire prone nature, to where a HUD assisted project can be located. The ASD is consistent with the Department's standards of blast overpressure (0.5 psi-buildings) and thermal radiation (450 BTU/ft² - hr - people and 10,000 BTU/ft² - hr - buildings). Calculation of the ASD is the first step to assess site suitability for proposed HUD-assisted projects near stationary hazards. Additional guidance on ASDs is available in the Department's guidebook "Siting of HUD- Assisted Projects Near Hazardous Facilities" and the regulation 24 CFR Part 51, Subpart C, Siting of HUD-Assisted Projects Near Hazardous Operations Handling Conventional Fuels or Chemicals of an Explosive or Flammable Nature.

Note: Tool tips, containing field specific information, have been added in this tool and may be accessed by hovering over the ASD result fields with the mouse.

Acceptable Separation Distance Assessment Tool

| | |
|---|---|
| Is the container above ground? | Yes: <input checked="" type="checkbox"/> No: <input type="checkbox"/> |
| Is the container under pressure? | Yes: <input type="checkbox"/> No: <input checked="" type="checkbox"/> |
| Does the container hold a cryogenic liquified gas? | Yes: <input type="checkbox"/> No: <input type="checkbox"/> |
| Is the container diked? | Yes: <input type="checkbox"/> No: <input checked="" type="checkbox"/> |
| What is the volume (gal) of the container? | <input type="text" value="2999"/> |
| What is the Diked Area Length (ft)? | <input type="text"/> |
| What is the Diked Area Width (ft)? | <input type="text"/> |
| <input type="button" value="Calculate Acceptable Separation Distance"/> | |
| Diked Area (sqft) | <input type="text"/> |
| ASD for Blast Over Pressure (ASDBOP) | <input type="text"/> |

| | |
|---|--------|
| ASD for Thermal Radiation for People (ASDPPU) | 437.03 |
| ASD for Thermal Radiation for Buildings (ASDBPU) | 83.54 |
| ASD for Thermal Radiation for People (ASDPNPD) | |
| ASD for Thermal Radiation for Buildings (ASDBNPD) | |

For mitigation options, please click on the following link: Mitigation Options
(</resource/3846/acceptable-separation-distance-asd-hazard-mitigation-options/>)

Providing Feedback & Corrections

After using the ASD Assessment Tool following the directions in this User Guide, users are encouraged to provide feedback on how the ASD Assessment Tool may be improved. Users are also encouraged to send comments or corrections for the improvement of the tool.

Please send comments or other input using the **Contact Us**
(<https://www.hudexchange.info/contact-us/>) form.

Related Information

- ASD User Guide (</resource/3839/acceptable-separation-distance-asd-assessment-tool-user-guide/>)
- ASD Flow Chart (</resource/3840/acceptable-separation-distance-asd-flowchart/>)



2755 41st Avenue, Santa

SEARCH RESULTS (235)

Site

Site [DOWNLOAD](#)

Export a CSV file containing information for the current sites.

Site Regulated Programs [DOWNLOAD](#)

Export a CSV file containing all site regulated programs for the current sites.

Affiliations [DOWNLOAD](#)

Export a CSV file containing all affiliations (i.e., contacts and organizations) for the current sites.

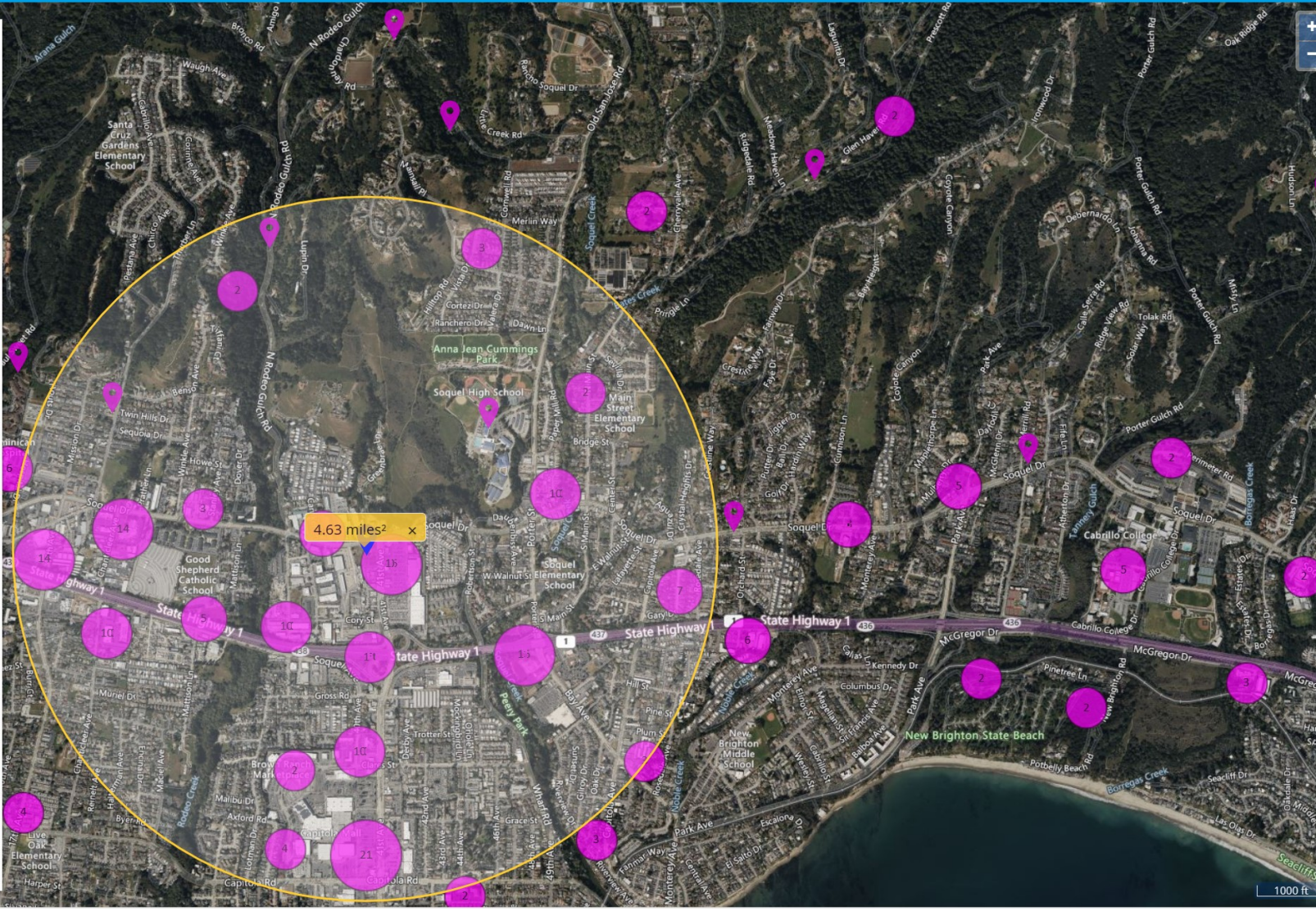
Coordinates [DOWNLOAD](#)

Export a CSV file containing all sites containing multiple coordinates. This does not include facilities with their primary coordinate.

Chemicals [DOWNLOAD](#)

Export a CSV file containing the top 2,000 chemicals for the current sites.

Compliance



| SiteID | SiteName | Address | City | ZIP | Latitude | Longitude | Description | Distance | Contents | Size | ASD | Issue? |
|--------|---|-----------------------|------------|-----------|----------|-----------|-------------------------------|----------|------------|--------|--------|--------|
| 19453 | CITY OF CAPITOLA CORPORATION YARD | 430 KENNEDY DR | CAPITOLA | 95010 | 36.9834 | -121.945 | Aboveground Petroleum Storage | 1 Mile + | | | | No |
| 53532 | Valvoline Instant Oil Change IH0009 | 2879 S RODEO GULCH RD | SOQUEL | 95073 | 36.9873 | -121.97 | Aboveground Petroleum Storage | 1231' | Motor Oil | 2999g | 437' | No |
| 92797 | Central Fire District of SC County | 6934 SOQUEL DR | APTOS | 95003 | 36.98587 | -121.919 | Aboveground Petroleum Storage | 1 Mile + | | | | No |
| 102908 | Cappo Management XXIII Inc. DBA Ocean Honda | 3801 SOQUEL DRIVE | SOQUEL | 95073 | 36.98825 | -121.967 | Aboveground Petroleum Storage | 575' | Motor Oil | 599g | 223.4' | No |
| 131814 | LUMBERMEN'S STORE #403 | 2435 41ST AVE | SOQUEL | 95073 | 36.98479 | -121.967 | Aboveground Petroleum Storage | 1214' | Diesel | 599g | 223.4' | No |
| 154765 | SOQUEL CREEK WATER DISTRICT | 5180 SOQUEL DR | SOQUEL | 95073 | 36.9867 | -121.95 | Aboveground Petroleum Storage | 4540' | Acetylene | 2599cf | 952' | No |
| | | | | | | | | | Gasoline | 2999g | 437' | No |
| 157685 | Santa Cruz Subaru | 4100 AUTO PLAZA DRIVE | CAPITOLA | 95010 | 36.98181 | -121.963 | Aboveground Petroleum Storage | 1973' | Motor Oil | 599g | 223.4' | No |
| | | | | | | | | | Acetylene | 2599cf | 952' | No |
| 162990 | Santa Cruz Toyota | 4200 AUTO PLAZA DR | CAPITOLA | 95010 | 36.98189 | -121.962 | Aboveground Petroleum Storage | 2138' | Gasoline | 1199g | 298.3' | No |
| | | | | | | | | | Acetylene | 2599cf | 952' | No |
| 403340 | SUTTER MATERNITY & SURGERY CENTER | 2900 CHANTICLEER AVE | SANTA CRUZ | 95065-181 | 36.9877 | -121.978 | Aboveground Petroleum Storage | 3464' | Diesel | 1199g | 298.3' | No |
| 404980 | United Rentals Branch 230 | 1835 SOQUEL DR | SANTA CRUZ | 95065 | 36.98871 | -121.98 | Aboveground Petroleum Storage | 4200' | Acetylene | 2599cf | 952' | No |
| | | | | | | | | | Diesel/Gas | 599g | 223.4' | No |